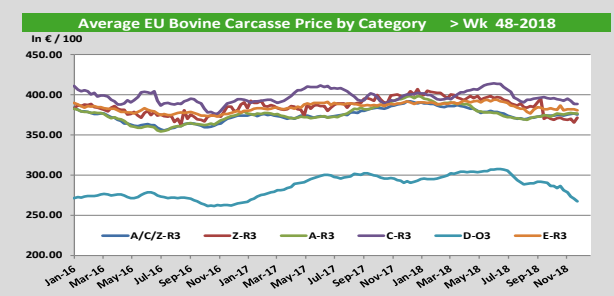
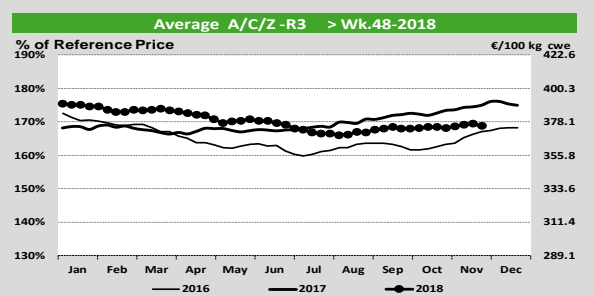
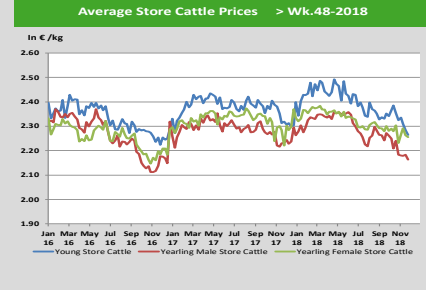
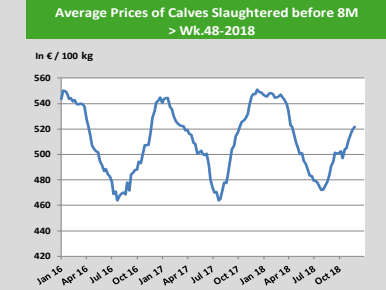
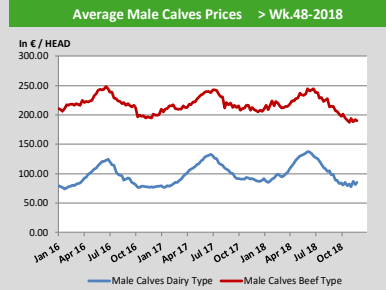
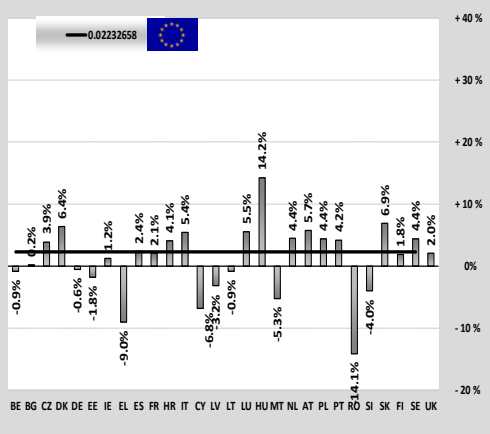


Prices

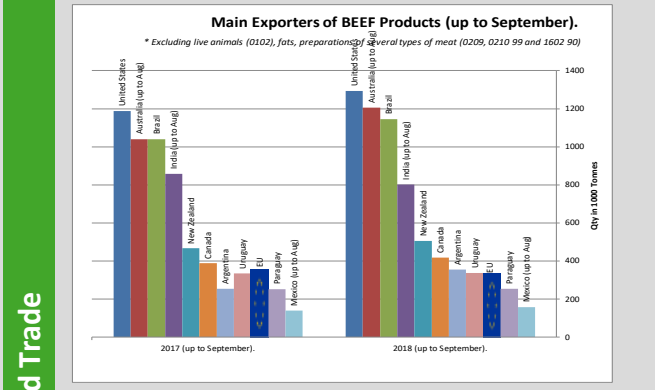
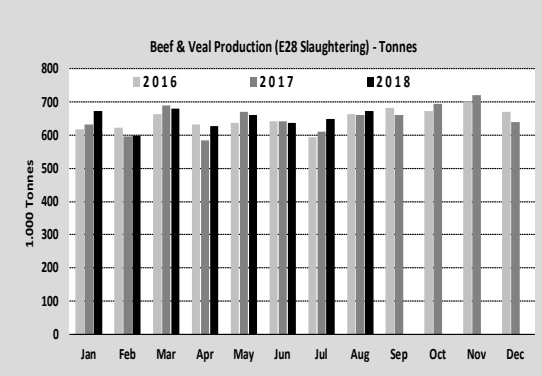
	EU Prices week	48	Evolution since last week	Evolution since last month	Evolution since last year
Carcasse	Average A/C/Z-R3	375.3	-0.4%	+0.4%	-3.6%
	Young Bovines (Z)	371.5	+1.6%	+0.7%	+1.6%
	Young Bulls (A)	374.1	-0.5%	+0.7%	-4.9%
	Steers (C)	390.8	-0.2%	-1.1%	-2.7%
	Cows (D)	267.2	-1.2%	-4.8%	-7.9%
	Heifers (E)	380.7	-0.2%	+0.1%	-2.4%
Live Animals	Male Calves Dairy Type	85.34	+4.7%	+3.4%	-5.2%
	Male Calves Beef Type	190.2	-1.1%	+1.4%	-1.1%
	Young Store Cattle	2.26	-0.9%	-2.6%	-2.4%
	Yearling Male Store Cattle	2.16	-0.9%	-0.9%	-3.1%
	Yearling Female Store Cattle	2.26	-0.3%	+1.1%	+1.6%
	Calves slaughtered <8M	521.6	+0.4%	+3.4%	-4.7%



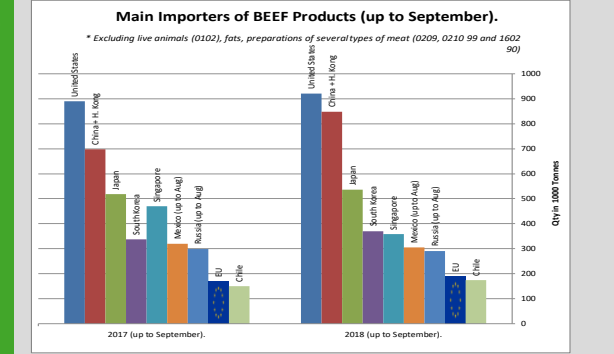
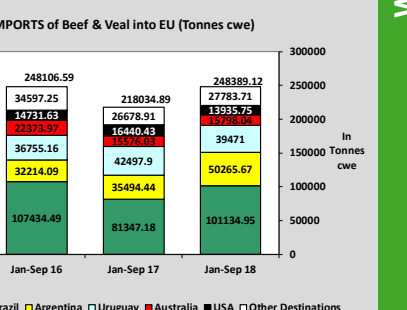
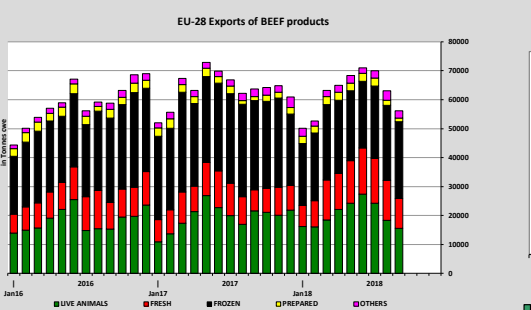
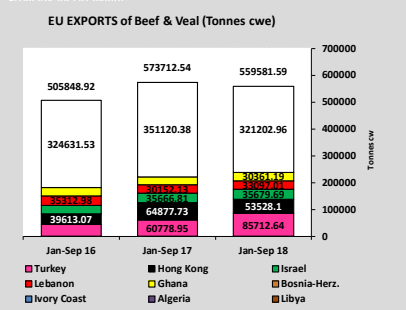
TONNES	Jan-Aug 17/18	EU15	EU28
Bull	-0.7%	+0.3%	+30%
Bullock	-1.6%	-1.6%	+20%
Cow	+4.6%	+3.9%	+10%
Heifer	+8.2%	+7.7%	+10%
Calve	+1.4%	+1.4%	+10%
Young cattle	-3.9%	-4.1%	+10%
Meat of bovine animals	+2.2%	+2.2%	+20%



Production



Trade

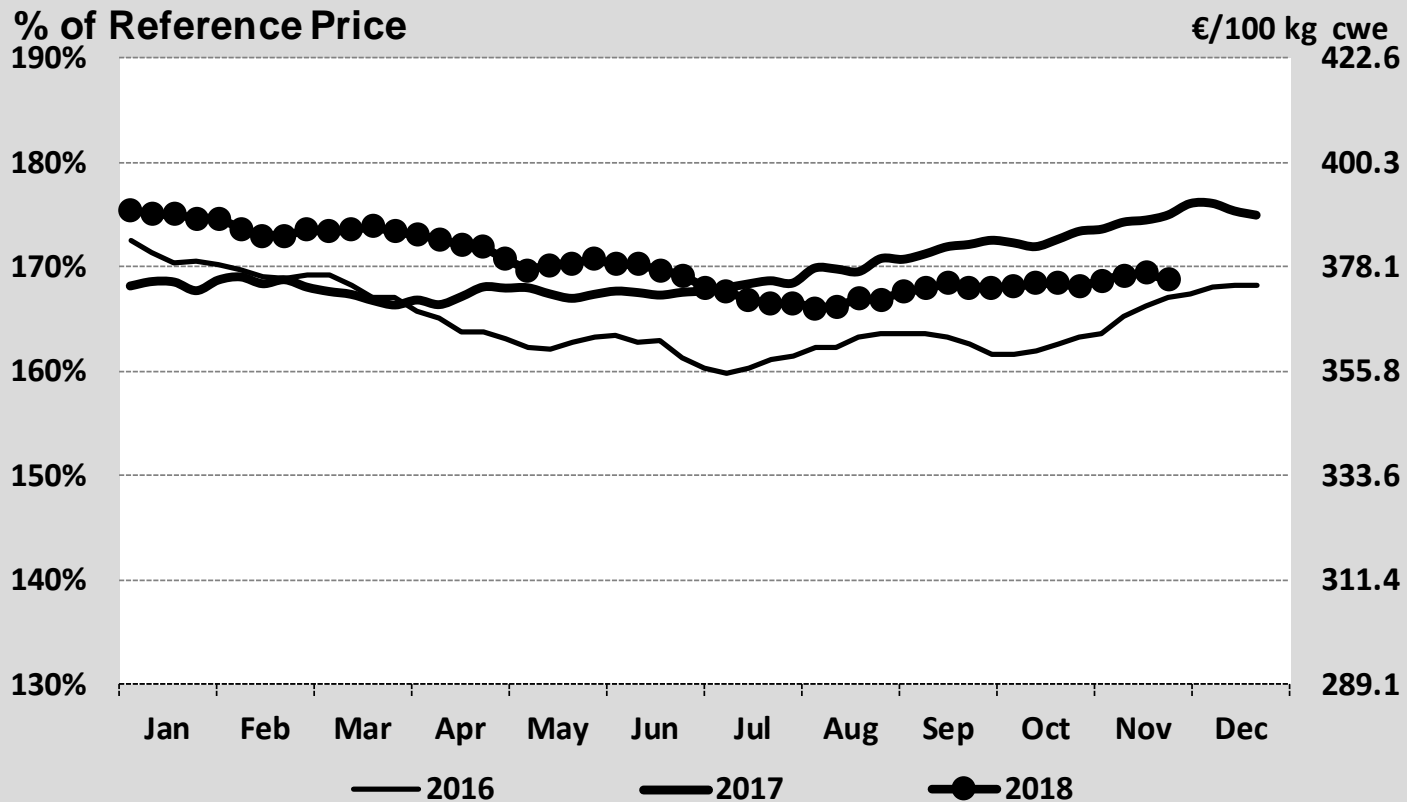


World Trade

EU Prices week		48	Evolution since last week	Evolution since last month	Evolution since last year
Carcasse	Average A/C/Z -R3	375.3	- 0.4%	+ 0.4%	- 3.6%
	Young Bovines (Z)	371.5	+ 1.6%	+ 0.7%	+ 1.6%
	Young Bulls (A)	374.1	- 0.5%	+ 0.7%	- 4.9%
	Steers (C)	390.8	- 0.2%	- 1.1%	- 2.7%
	Cows (D)	267.2	- 1.2%	- 4.8%	- 7.9%
	Heifers (E)	380.7	- 0.2%	+ 0.1%	- 2.4%
Live Animals	Male Calves Dairy Type	85.34	+ 4.7%	+ 3.4%	- 5.2%
	Male Calves Beef Type	190.2	- 1.1%	+ 1.4%	- 1.1%
	Young Store Cattle	2.26	- 0.9%	- 2.6%	- 2.4%
	Yearling Male Store Cattle	2.16	- 0.9%	- 0.9%	- 3.1%
	Yearling Female Store Cattle	2.26	- 0.3%	+ 1.1%	+ 1.6%
	Calves slaughtered <8M	521.6	+ 0.4%	+ 3.4%	- 4.7%

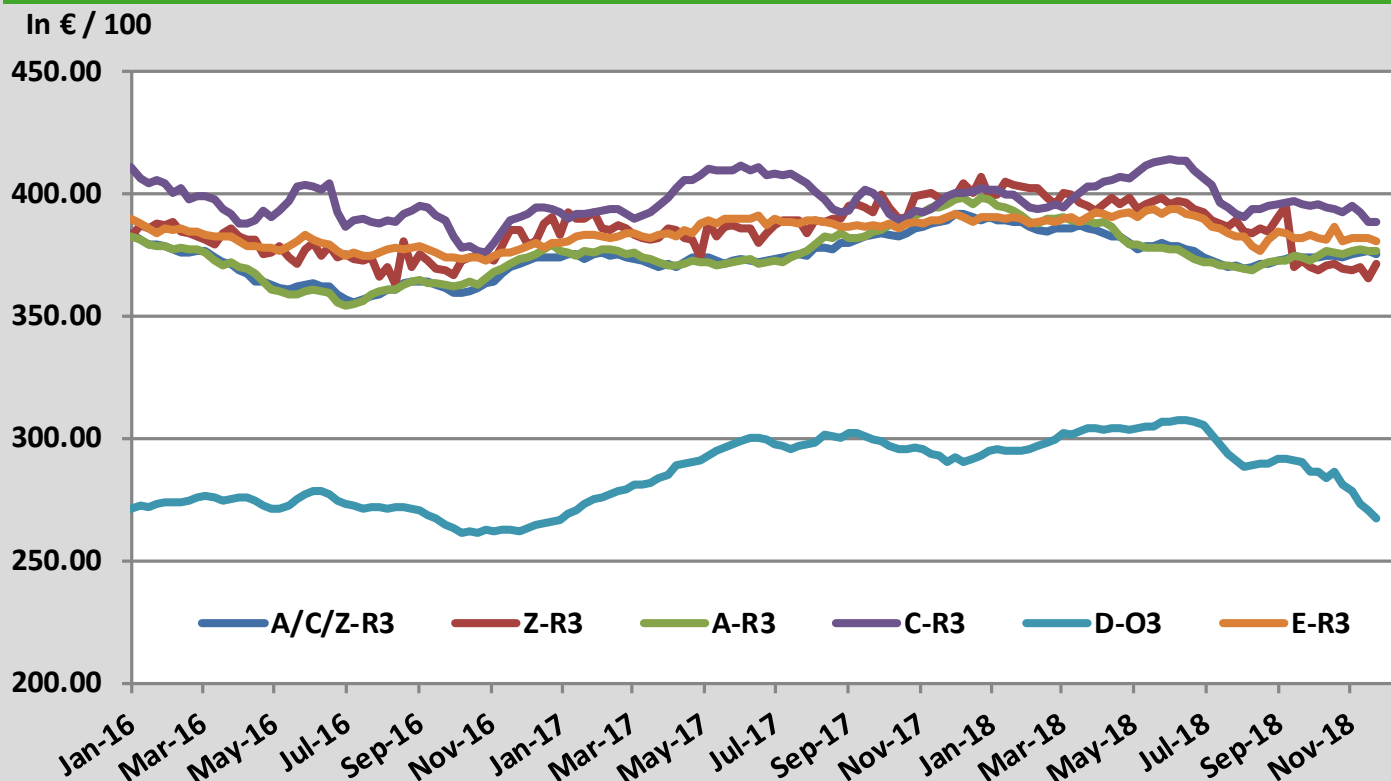
Sources : MSs notifications (Regulation (EC) 1249/2008 and 807/2013)

Average A/C/Z -R3 > Wk.48-2018



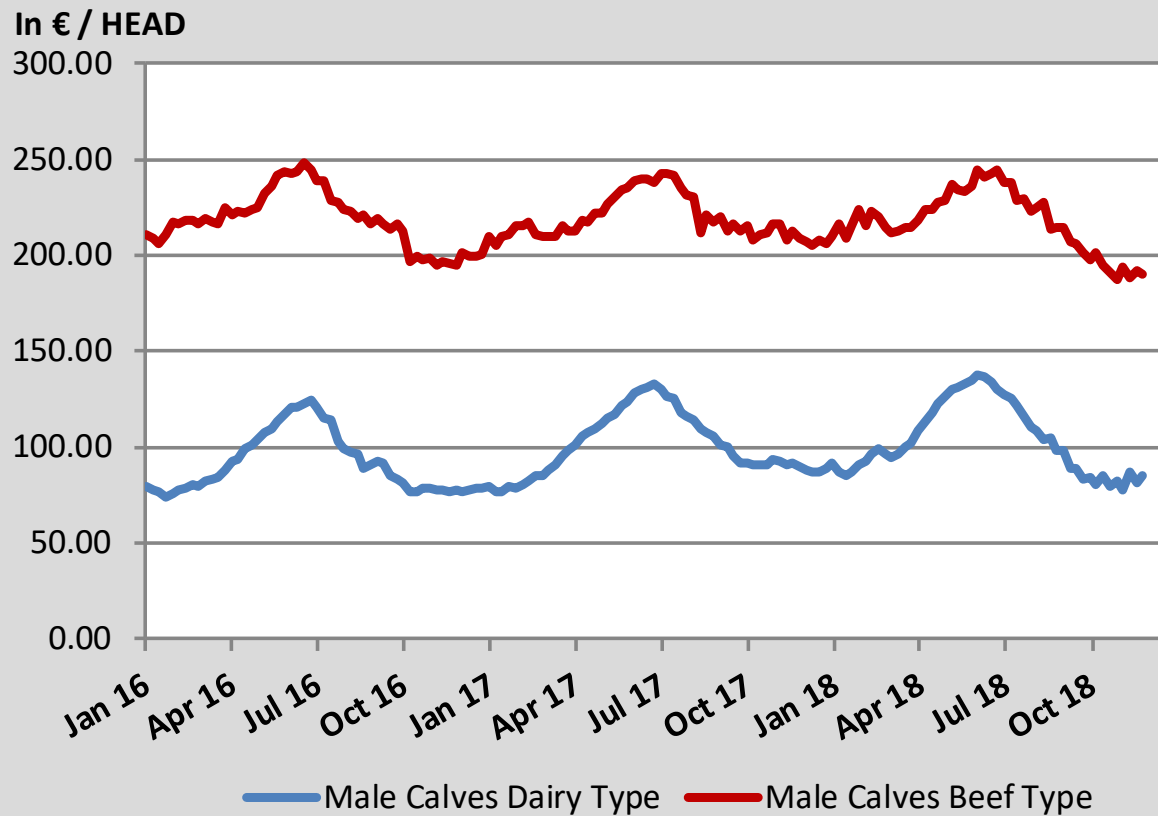
Source : MSs notifications (Regulation (EC) 1249/2008)

Average EU Bovine Carcasse Price by Category > Wk 48-2018



Source : MSs notifications (Regulation (EC) 1249/2008)

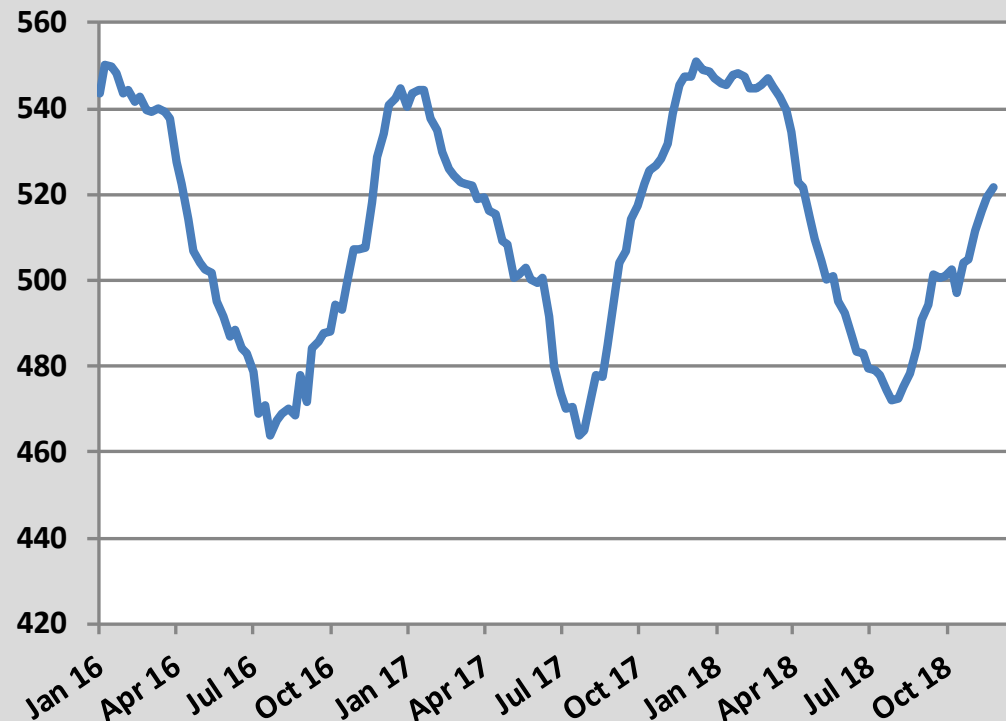
Average Male Calves Prices > Wk.48-2018



Source : MSs notifications (Regulation (EC) 807/2013)

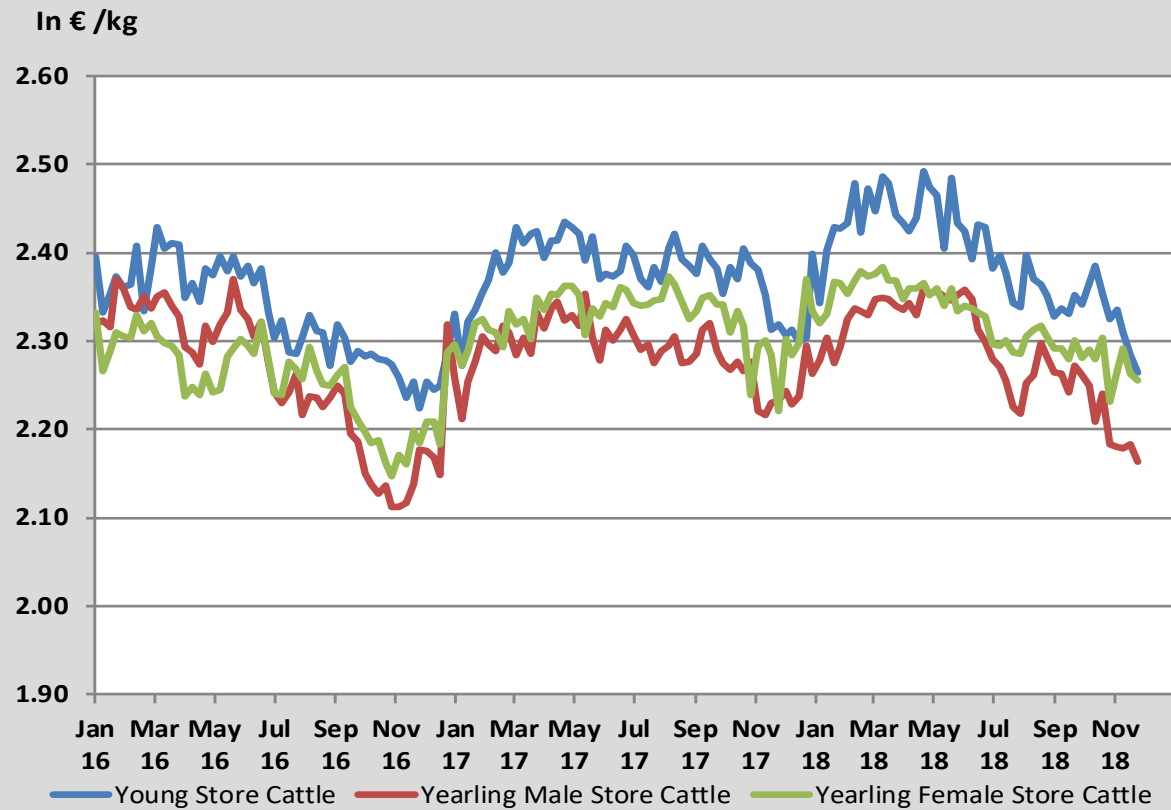
Average Prices of Calves Slaughtered before 8M > Wk.48-2018

In € / 100 kg



Source : MSs notifications (Regulation (EC) 807/2013)

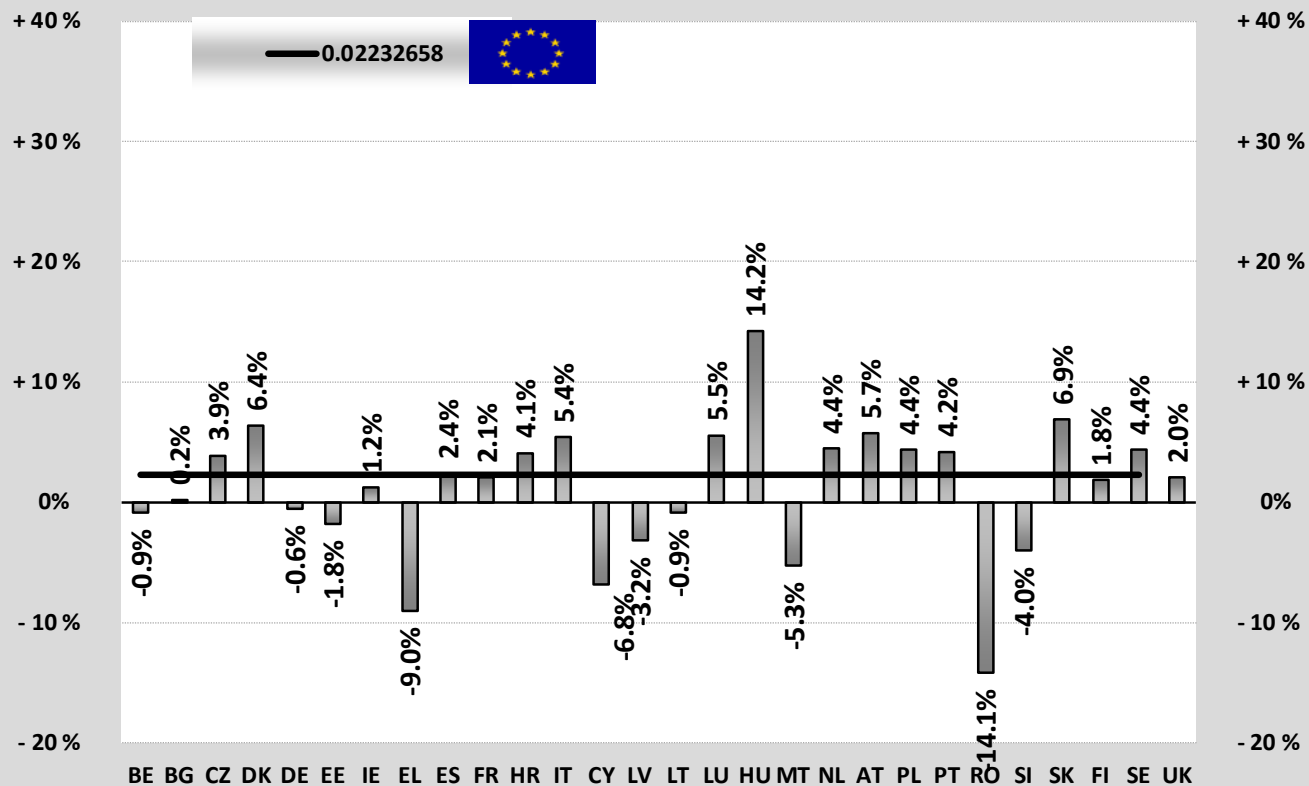
Average Store Cattle Prices > Wk.48-2018



Source : MSs notifications (Regulation (EC) 807/2013)

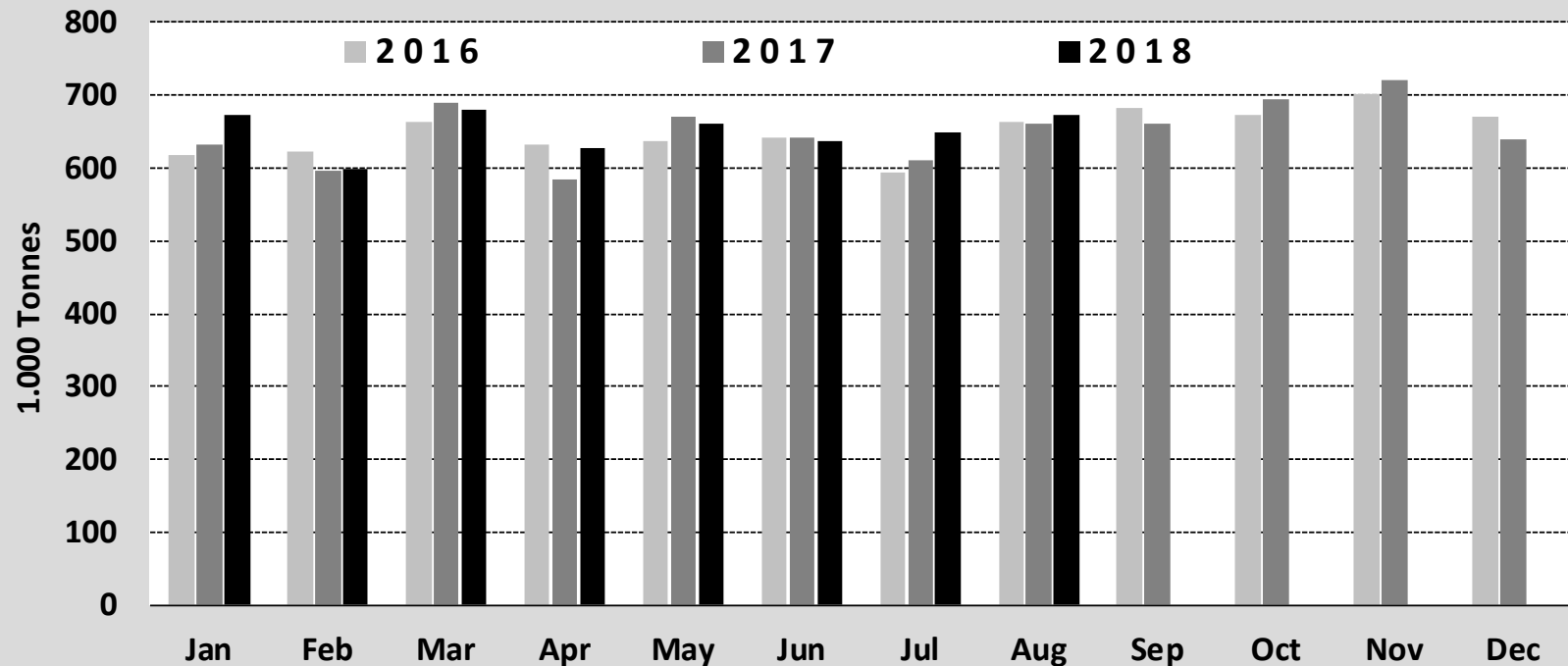
TONNES	Jan-Aug 17/18	
	EU15	EU28
Bull	-0.7%	+0.3%
Bullock	-1.6%	-1.6%
Cow	+4.6%	+3.9%
Heifer	+8.2%	+7.7%
Calve	+1.4%	+1.4%
Young cattle	-3.9%	-4.1%
Meat of bovine animals	+2.2%	+2.2%

Estimates for last month :



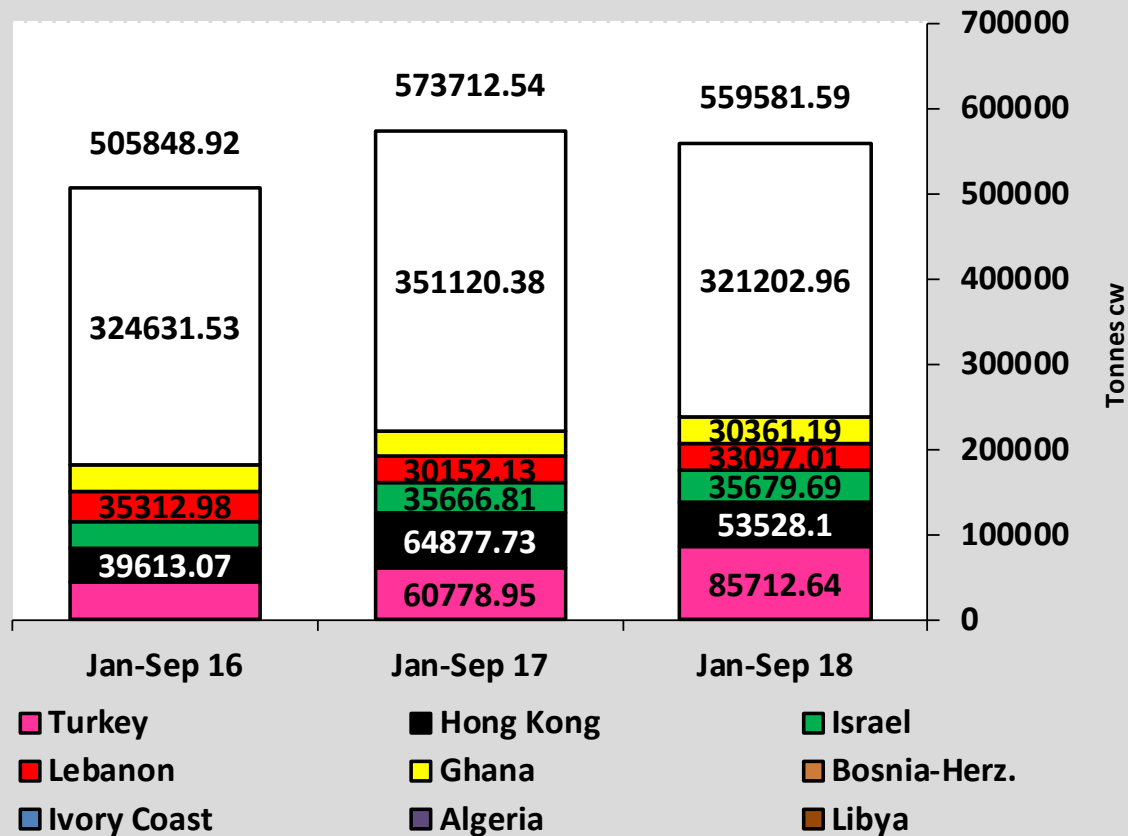
Source : Eurostat

Beef & Veal Production (E28 Slaughtering) - Tonnes



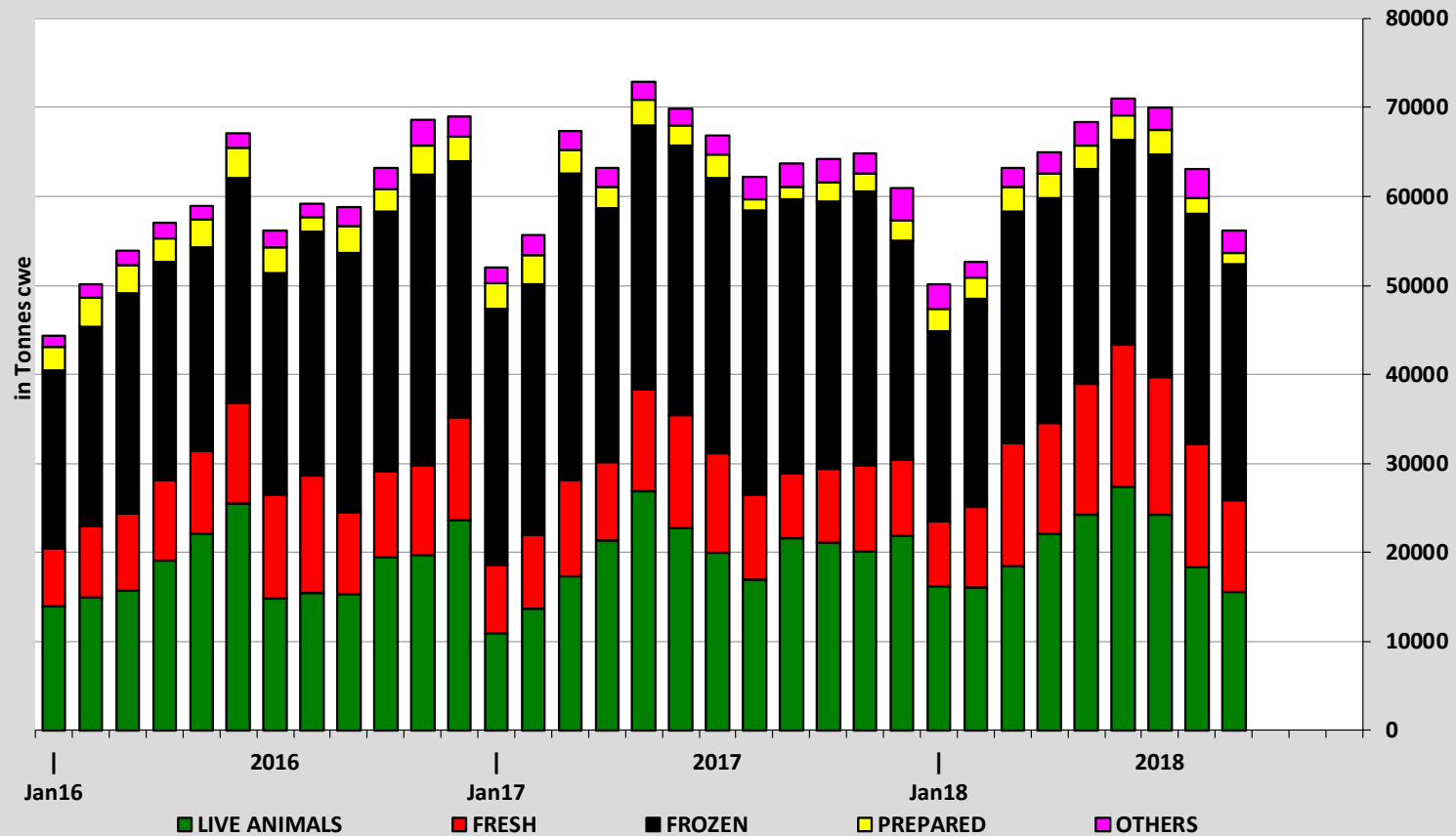
Source : Eurostat

EU EXPORTS of Beef & Veal (Tonnes cwe)



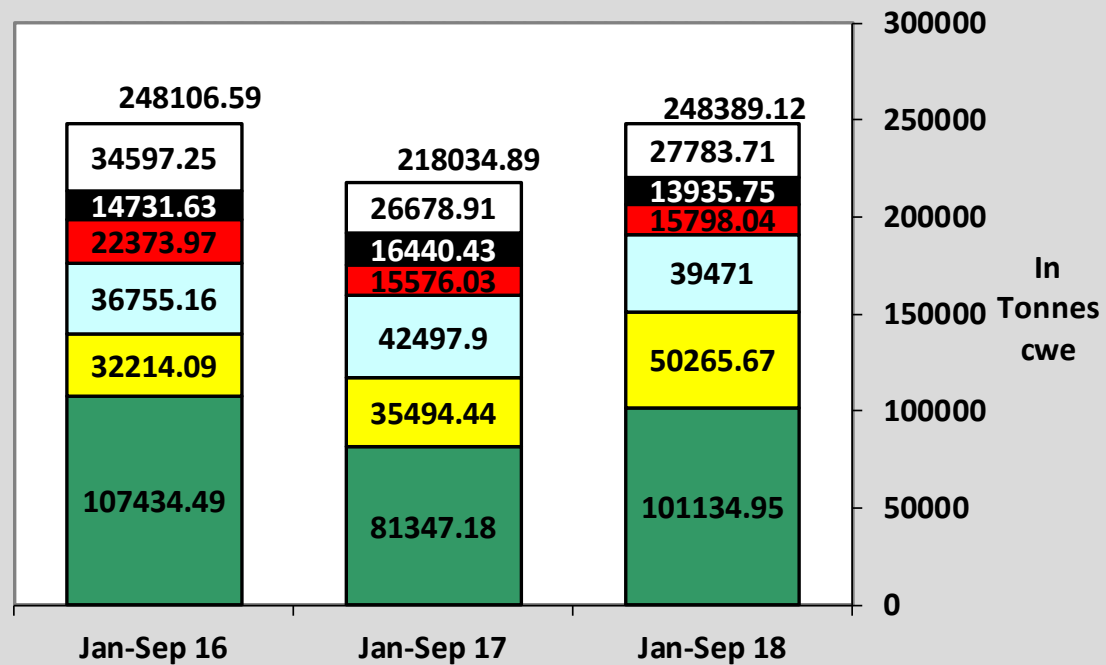
Source : Eurostat - Comext

EU-28 Exports of BEEF products



Source : Eurostat - Comext

IMPORTS of Beef & Veal into EU (Tonnes cwe)

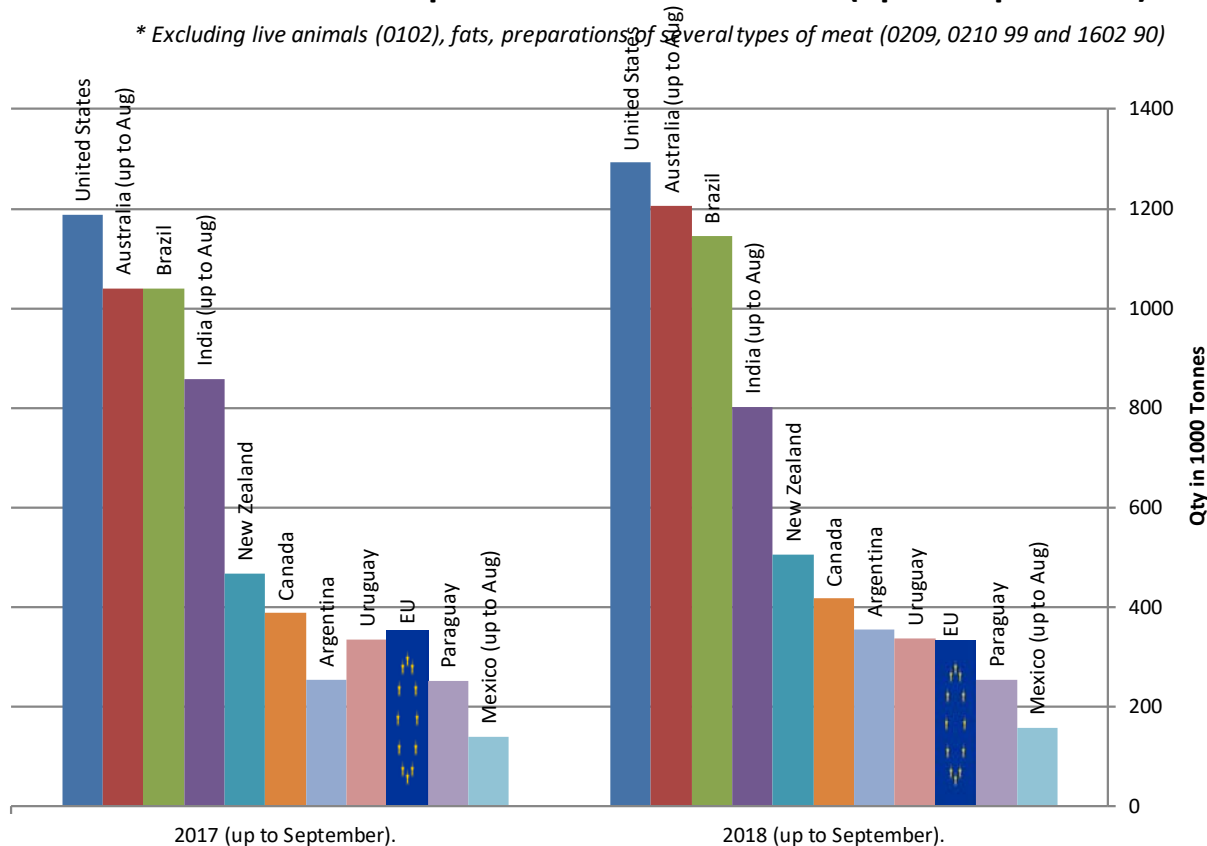


■ Brazil
 ■ Argentina
 ■ Uruguay
 ■ Australia
 ■ USA
 ■ Other Destinations

Source : Eurostat - Comext

Main Exporters of BEEF Products (up to September).

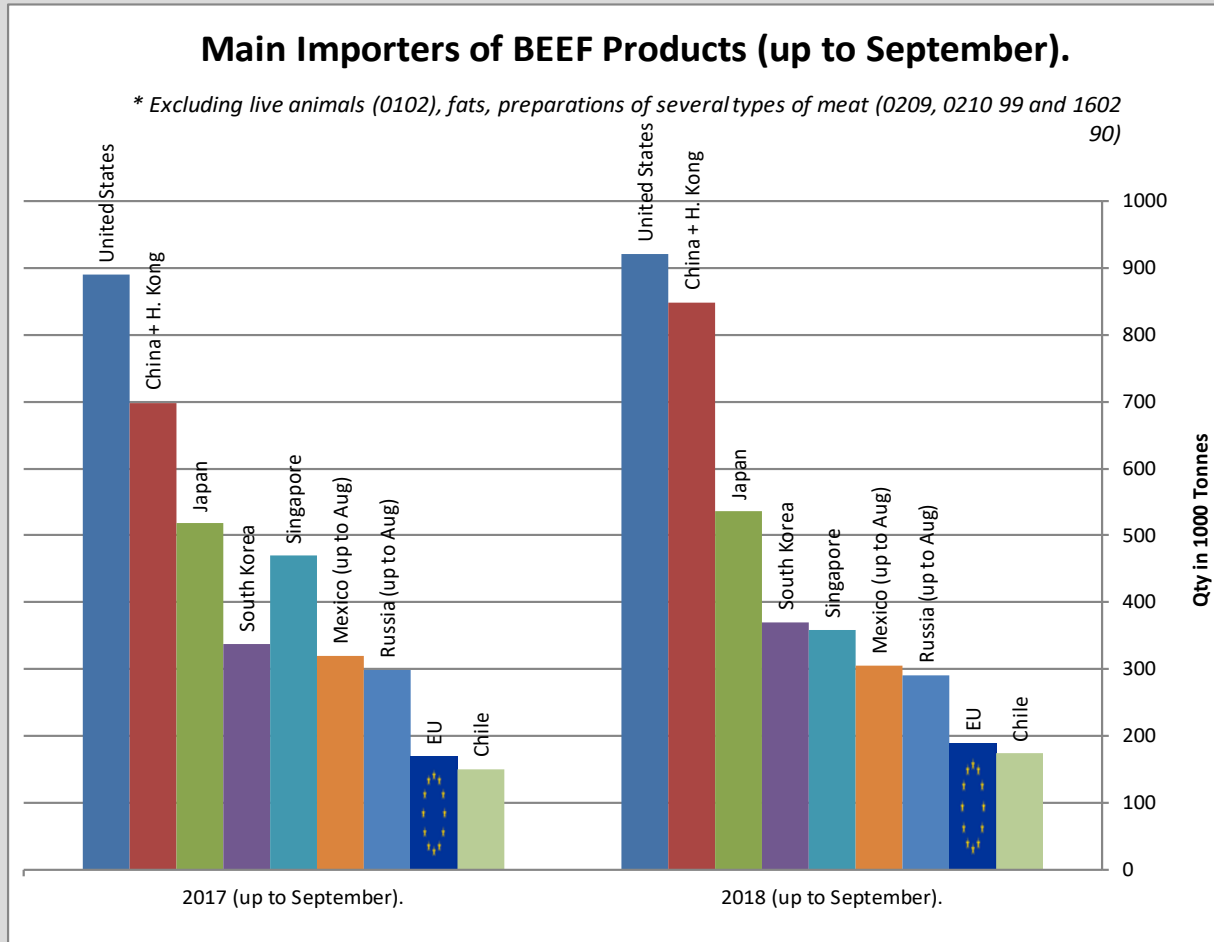
* Excluding live animals (0102), fats, preparations of several types of meat (0209, 0210 99 and 1602 90)



Sources : Global Trade Information Services, Inc. and Eurostat - Comext

Main Importers of BEEF Products (up to September).

* Excluding live animals (0102), fats, preparations of several types of meat (0209, 0210 99 and 1602 90)



Sources : Global Trade Information Services, Inc. and Eurostat - Comext